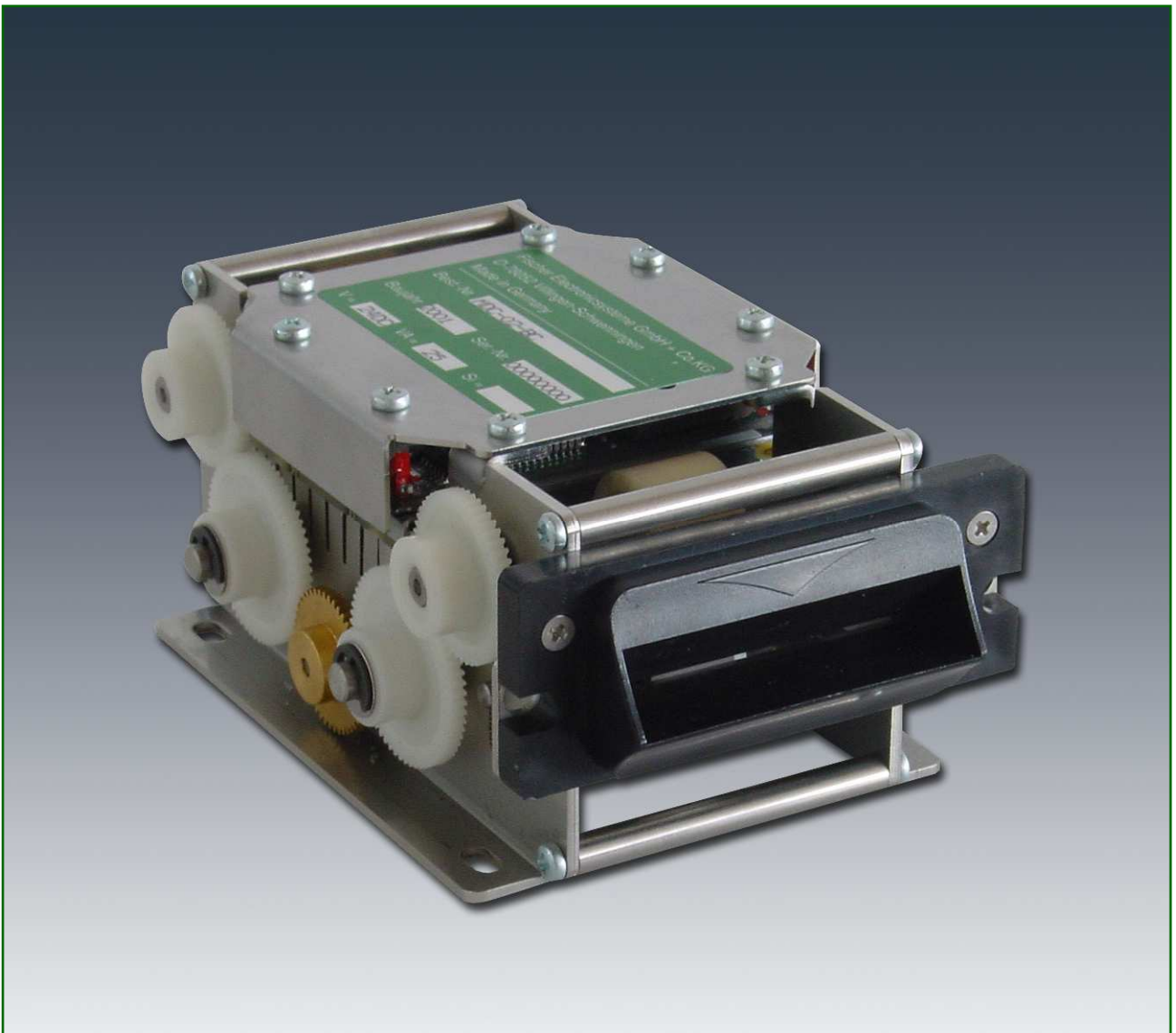


## MDCL-01

Motor-driven Reader for Contactless Chip-Cards



## Description

---

The extremely robust motor reader for contactless cards fulfills the increasing requirements regarding the reading reliability and hassle-free integration into already existing systems.

The MDCL can be equipped with all established RFID reading systems. In addition, different mouthpiece versions and a securer vandalism shutter are available, which completely secures the card implementation.

The MDCL offers the possibility to retain cards and, for example, discharge them in a subsequent container.

The data traffic takes place over a RS-232-interface, which can be optionally accessed over an Ethernet COM server. It contains both the information from or to the contactless card and the control information for the functions of the MDCL.

For the input in reader columns in the exterior, an installation chassis with heating and a thermostat is available.

## Characteristics

---

- Easy control over RS-232 interface
- Vandalism-secure assembly
- All parts are made out of 1.4301 III high grade steel
- Electromagnetic shutter (optional)
- Mechanical shutter (optional)
- LEGIC, MIFARE, HITAG, ISO15693, et al.
- Installation chassis with heating and thermostat
- Retention of cards is possible
- Low-wear rubber rolls out of santoprene
- Direct drive over gears
- Also available for paper cards and thin plastic cards

## Application

---

The MDCL is a particularly good solution for when contactless cards have to be read securely and retained if necessary. Due to its extremely robust construction, the MDCL is simply predestinated for the hardest operating conditions, such as in the field of access control.

A large number of different delivery versions makes the optimal integration in the field of application possible. If desired, customized versions can be realized.

Typical fields of application include:

Access control systems, customer retention systems, visitor statistics, POS, business acquisition and time data acquisition.

## Technical Data

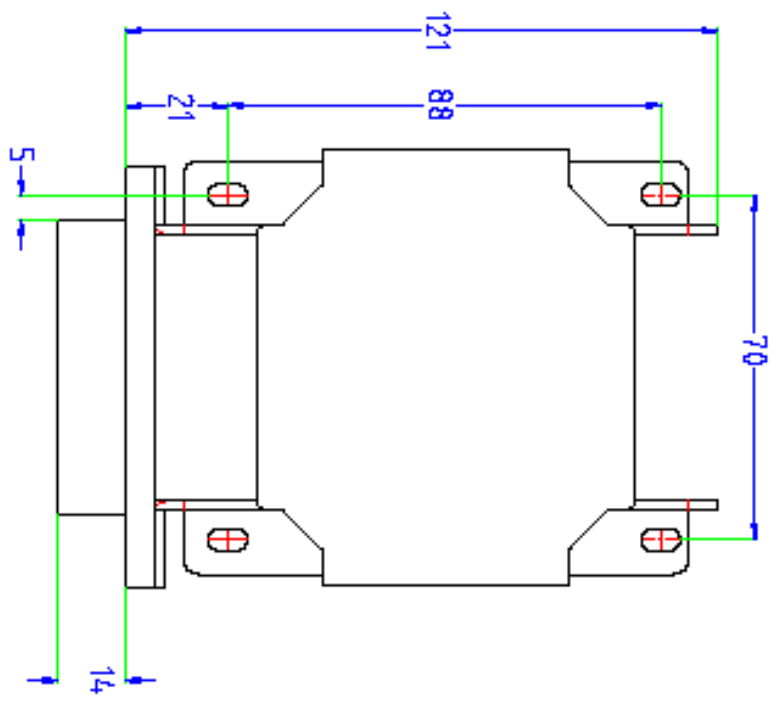
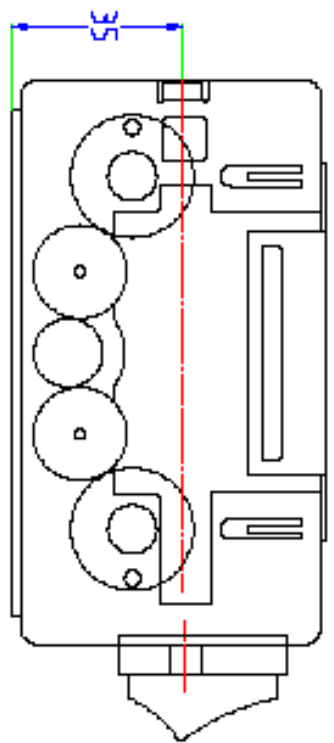
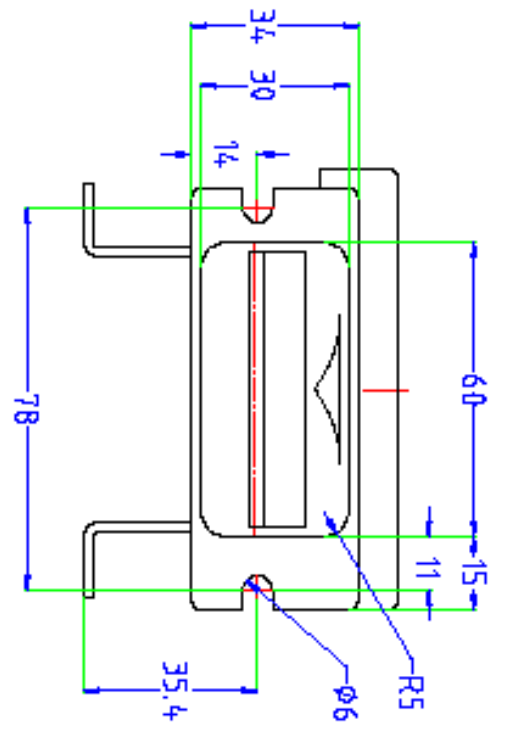
---

- Operating voltage 24VDC
- Operating temperature 0°C - 55°C
- Humidity 30%-90% rel. humidity not condensed
- Weight approx. 1 kg
- Card technologies Mifare, LEGIC, HITAG others by request
- Card sizes 86 x 54mm, 0,25 to 0,76 mm thick
- Cycle time approx. 1 second (reading)
- Interfaces RS232, Ethernet
- Protocol TLP224

## Delivery Versions

---

- **MDCL-01/ LW**  
Drive includes motor and position control
- **MDCL-01/C basic**  
Reader includes controller for activation
- **MDCL-01/C**  
Reader includes controller with I/O (relay / opto)



Zul. Abw.	DIN ISO 2168 -R1		Oberfl.		Schutzart/Indikator nach DIN 24	Indikator	11
			Bestellteil-Nr.	Datum	Name	Einbau MDCL01-UNI	
			Gez.		SCHWITZ		
			Norm				
			Fischer				
			Elektromechanische Bauteile				
ZUST	ÄNDERUNG	DATUM	NAME	URSACHUNG	ERSETZTE TEILE	100006-003E	Blatt
					ERSETZT DURCH		1/1